



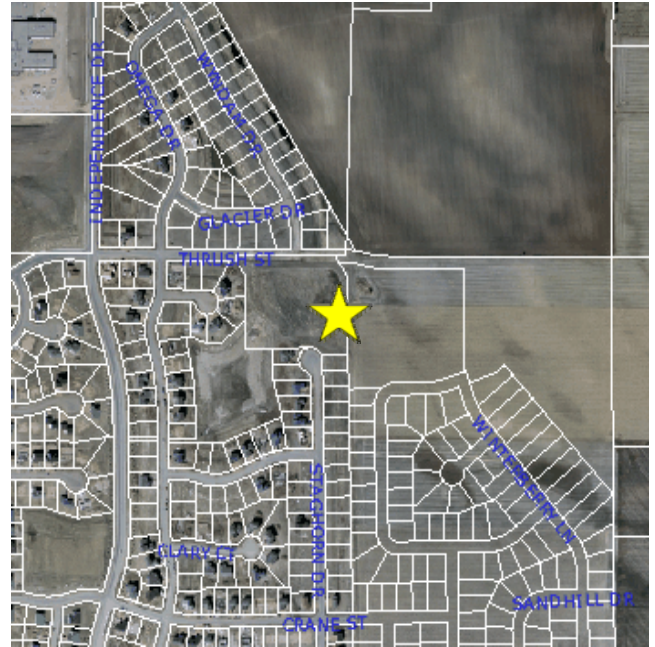
# Parks & Recreation and Natural Resources

## Greenfield East/Park Meadows Neighborhood Park Meeting

Come and discuss options for your new park at 3100 Thrush Street. The 13 acre park is being designed this spring with construction to begin in June.

This will be your opportunity to view and comment on concept plans that show how the entire park area can be developed to its full potential.

This park has been identified in the City's Capital Improvement Program for "Active Uses," which may include: a playground, ball fields, ice skating, hockey, parking, and supporting structures. Utilities such as lighting and water will also be added to support those uses.



***Please come and help shape your park!***

**Thursday, March 10**

**6:30 p.m. to 7:30 p.m.**

Sun Path Elementary School Cafeteria  
2250 17<sup>th</sup> Avenue East, *(use the lower entry)*

There will be a short presentation at 6:30  
with Q & A time afterward.

We would like input from all residents, young and old!

If you require auxiliary aids or services to participate or communicate in the meeting, please contact Parks and Recreation at 952-233-9500/TTY 952-496-4122, 72 hours prior to the meeting time to make a request. Examples may include: sign language interpreter, assistive listening device, large print agenda, etc.

For more information, go to < [http://www.ci.shakopee.mn.us/park\\_development.cfm](http://www.ci.shakopee.mn.us/park_development.cfm) > or, contact Jamie Polley, Director Shakopee Parks Recreation and Natural Resources, about this park design or meeting content at [jpolley@ci.shakopee.mn.us](mailto:jpolley@ci.shakopee.mn.us).

1255 Fuller Street South  
Shakopee, MN 55379

Phone: 952-233-9500  
FAX: 952-233-3831  
TTY: 952-496-4122

[www.ci.shakopee.mn.us](http://www.ci.shakopee.mn.us)  
[parks@ci.shakopee.mn.us](mailto:parks@ci.shakopee.mn.us)