



meeting 4



Comprehensive Park, Trail, & Open Space Plan Update

April 9, 2007

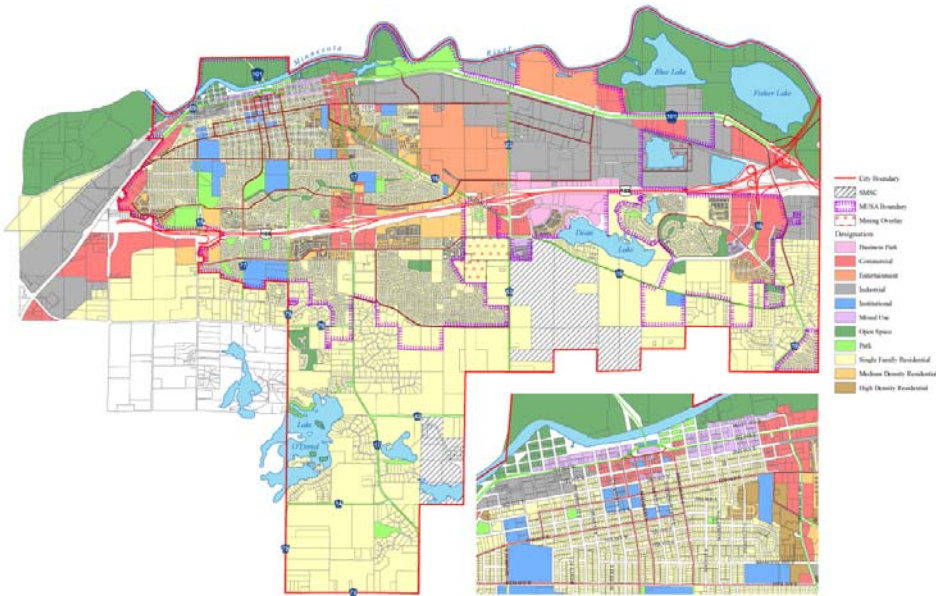
Shakopee Community Center

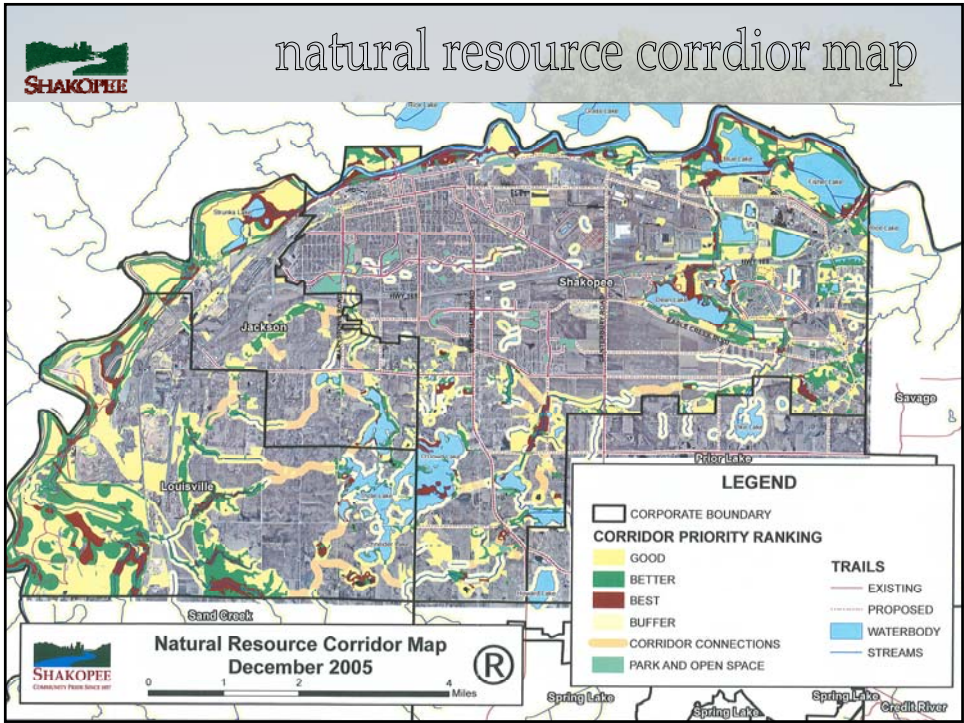
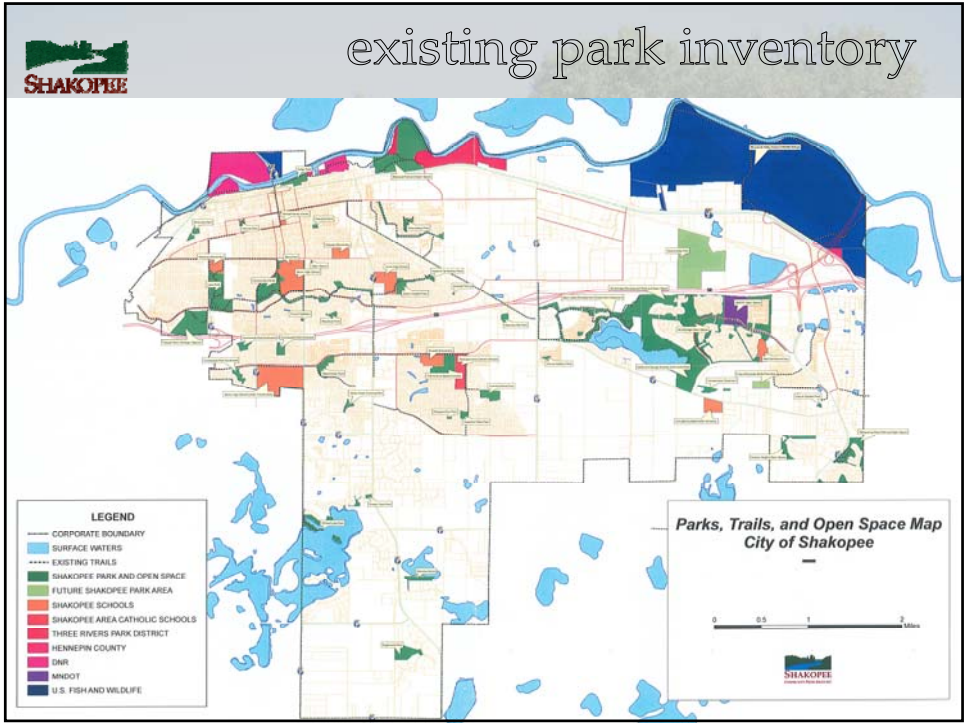
Rotary Room

6:30-9:00pm



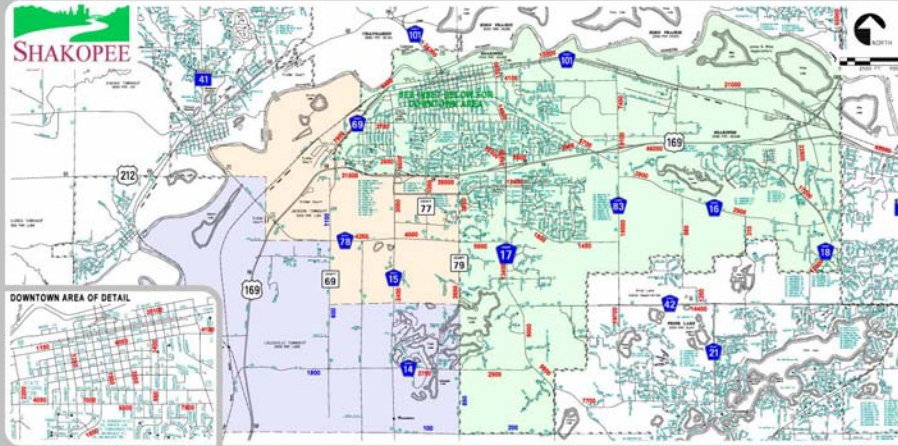
land use map







existing traffic volumes



City of Shakopee, Minnesota
Transportation Plan Update

Prepared by:
WSB
Watershed Services, Inc.
10000 Valley Road, Suite 100
Shakopee, MN 55425
www.wsbgroup.com

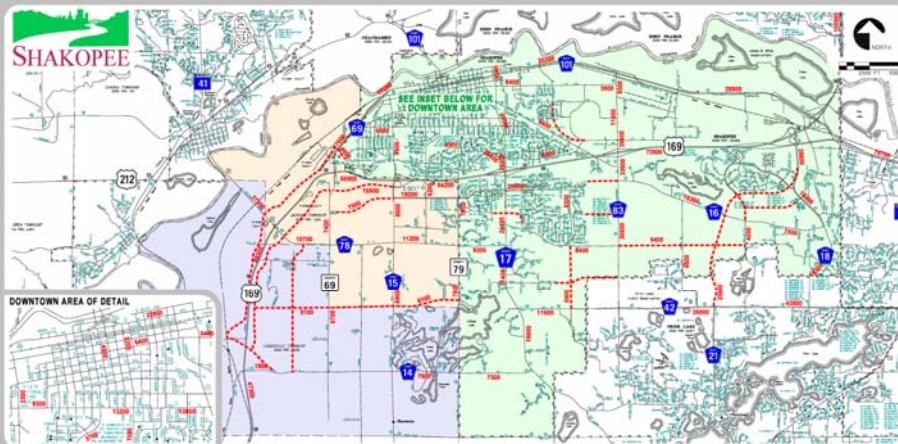
Legend
 xxxxx 2004 Data
 Source: Minnesota Department of Transportation

"DRAFT"
2005 Daily
Traffic Volumes

Figure 2.4



projected traffic volumes



City of Shakopee, Minnesota
Transportation Plan Update

Prepared by:
WSB
Watershed Services, Inc.
10000 Valley Road, Suite 100
Shakopee, MN 55425
www.wsbgroup.com

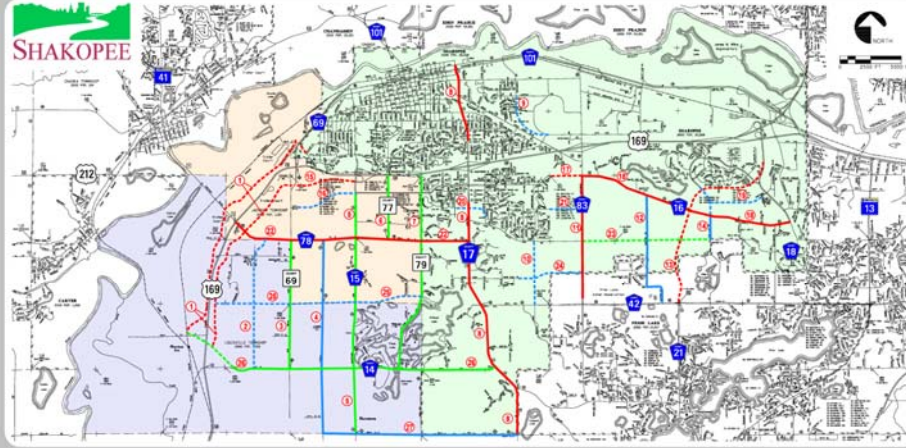
Legend
 ----- Future Roadway
 Note: Assumes 2030 Land Use and Baseline
 Future Roadway Network Plus Valley
 View Road Extension

"DRAFT"
Projected 2030
Daily Traffic Volumes

Figure 5.2



future needs



City of Shakopee, Minnesota
Transportation Plan Update

Prepared by:
WSB
127 Dakota Avenue South, Suite 200
Shakopee, MN 55425
www.wsbinc.com

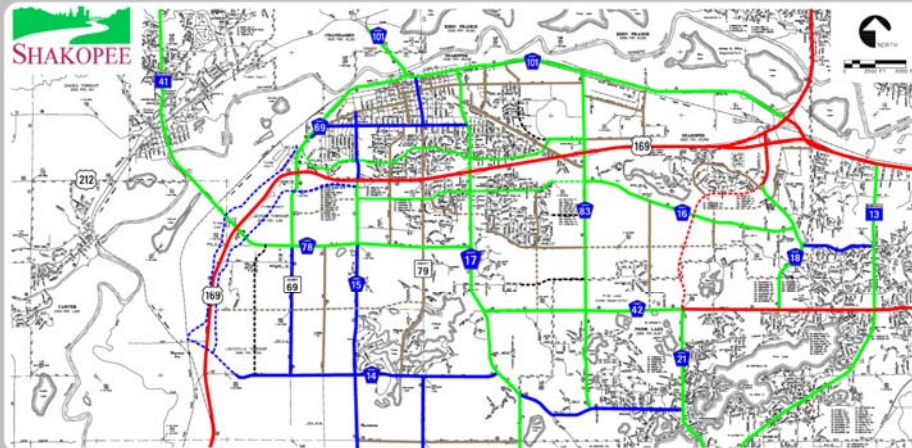
- Legend**
- 2 Lane Urban - Upgrade
 - - - 2 Lane Urban - New Roadway
 - 3 Lane Urban - Upgrade
 - - - 3 Lane Urban - New Roadway
 - 4 Lane with Turn Lanes - Upgrade
 - - - 4 Lane with Turn Lanes - New Roadway
- ⓧ Please refer to Table 5.2 for improvement project identification.
- Please Note:*
Actual final alignments may be somewhat different from those depicted to account for natural features and / or right-of-way issues.

"DRAFT"
**Future Roadway
Capacity / Design Needs**

Figure 5.3



future roadways



City of Shakopee, Minnesota
Transportation Plan Update

Prepared by:
WSB
127 Dakota Avenue South, Suite 200
Shakopee, MN 55425
www.wsbinc.com

- Note: Future Functional Class Network may vary depending on TH 41 River Crossing analysis and recommendations.*
- Legend**
- Principal Arterial
 - "A" Minor Arterial
 - "B" Minor Arterial
 - Collector
 - Local Road
 - - - Future Principal Arterial
 - - - Future "A" Minor Arterial
 - - - Future "B" Minor Arterial
 - - - Future Collector
 - - - Future Local Road

"DRAFT"
**2030 Roadway
Functional Classification**

Figure 6.1



Facility Projections



influential factors

- **Enrollment Caps = Waiting Lists (ie: volleyball)**
- **Lighted Fields vs Non-Lighted (ie: football & soccer)**
- **Scheduling -inadequate space (ie: baseball, volleyball, softball, basketball, hockey, soccer)**
- **Marketing of Sport (ie: tennis)**
- **Sport needs year around – indoor facilities, camps**

Type of Facility	2006 Facilities by Location				Target ages of sports programs	2006 # of Shak. & Jack. Twp residents in sports programs that use facility type
	Parks	Schools	Other	Total		
Youth ballfields ¹	7	22	0	29	5-16	1,315
Baseball fields (adult)	0	0	1	1	18+	60
Softball fields (adult)	8	0	0	8	18+	1,027
Football fields	4	3	1	8	8-11	248
Soccer fields (regulation)	7	3	0	10	8-17	324
Soccer fields (micro) ²	42	12	0	54	4-8	493
Tennis courts ³	4	4	0	8	7-17	400
Basketball courts	0	10	2	12	7+	677
Volleyball courts ⁴	0	10	1	11	12+	462
Hockey rinks ⁵	0	0	1	1	6-15	317
Wrestling space	0	1	0	1	5-12	90

Type of Facility	2006 Facilities by Location				Target ages of sports programs	2006 # of Shak. & Jack. Twp residents in sports programs that use facility type	2006 Shakopee & Jackson Twp pop. in target age group	% participation of age group	National trends in participation of sports that use facility type	Program participants per facility
	Parks	Schools	Other	Total						
Youth ballfields ¹	7	22	0	29	5-16	1,315	6,358	20.7%	down	45
Baseball fields (adult)	0	0	1	1	18+	60	22,970	0.26%	down	60
Softball fields (adult)	8	0	0	8	18+	1,027	22,970	4.5%	down	128
Football fields	4	3	1	8	8-11	248	2,185	11.4%	up	31
Soccer fields (regulation)	7	3	0	10	8-17	324	4,765	6.8%	up	32
Soccer fields (micro) ²	42	12	0	54	4-8	493	2,797	17.6%	up	9
Tennis courts ³	4	4	0	8	7-17	400	5,311	7.5%	down	50
Basketball courts	0	10	2	12	7+	677	28,281	2.4%	down	56
Volleyball courts ⁴	0	10	1	11	12+	462	25,550	1.8%	down	42
Hockey rinks ⁵	0	0	1	1	6-15	317	5,090	6.2%	no data	317
Wrestling space	0	1	0	1	5-12	90	4,553	2.0%	no data	90

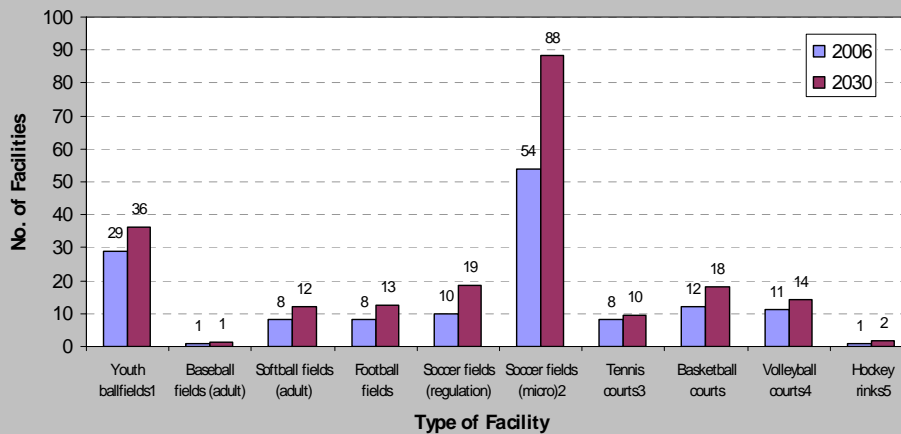
Projected Park Facility Need Based on Shakopee Sports Group Participation Rates and National Trends

Projected Park Facility Need Based on Shakopee Sports Group Participation Rates and National Trends

Type of Facility	2006 Facilities by Location				Target ages of sports programs	2006 # of Shak. & Jack. Twp residents in sports programs that use facility type	2006 Shakopee & Jackson Twp pop. in target age group	% participation of age group	National trends in participation of sports that use facility type	Program participants per facility	2030 Forecasts				
	Parks	Schools	Other	Total							Projected pop. in target age group	Projected % participation of age group	Projected # of residents in programs to use facility type	Projected facility need*	New facilities to be added
Youth ballfields ¹	7	22	0	29	5-16	1,315	6,358	20.7%	down	45	9,311	17.7%	1,648	36	7
Baseball fields (adult)	0	0	1	1	18+	60	22,970	0.26%	down	60	39,082	0.20%	78	1	0
Softball fields (adult)	8	0	0	8	18+	1,027	22,970	4.5%	down	128	39,082	4.0%	1,584	12	4
Football fields	4	3	1	8	8-11	248	2,185	11.4%	up	31	3,153	12.4%	391	13	5
Soccer fields (regulation)	7	3	0	10	8-17	324	4,765	6.8%	up	32	6,873	8.8%	605	19	9
Soccer fields (micro) ²	42	12	0	54	4-8	493	2,797	17.6%	up	9	4,246	19.0%	807	68	34
Tennis courts ³	4	4	0	8	7-17	400	5,311	7.5%	down	50	7,662	6.3%	483	10	2
Basketball courts	0	10	2	12	7+	677	28,281	2.4%	down	56	46,754	2.2%	1,029	18	6
Volleyball courts ⁴	0	10	1	11	12+	462	25,550	1.8%	down	42	42,813	1.4%	599	14	3
Hockey rinks ⁵	0	0	1	1	6-15	317	5,090	6.2%	no data	317	7,402	7.0%	518	2	1
Wrestling space	0	1	0	1	5-12	90	4,553	2.0%	no data	90	7,809	2.0%	156	2	1

¹ Youth ballfields are used by softball, little league, t-ball, and nearball programs.
² The vast majority of "micro" soccer fields are created by partitioning each of the 10 regulation soccer fields into 4 "micro" soccer fields.
³ The park system also includes an additional 17 courts (5 in parks and 11 at schools) not used by sports groups.
⁴ There are four outdoor sand volleyball courts that are not used by sports groups.
⁵ There are three outdoor hockey that are not used by sports groups.
 Note: All participation and population figures are for both Shakopee and Jackson Township.
 * Projected facility need is calculated as follows: (2030 pop x 2030 participation rate) ÷ (2006 participants ÷ # of facilities). The 2030 participation rate is derived from the 2006 participation rate based on minor adjustments to account for recent national trends.
 Sources: City of Shakopee; National Sporting Goods Association; Bonestroo

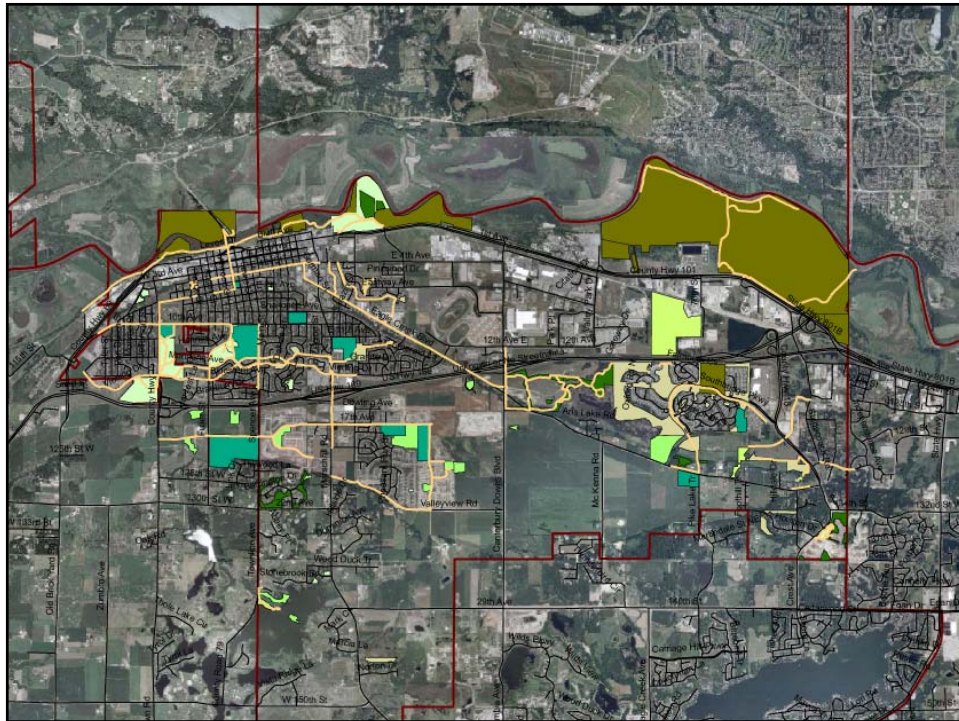
Current and Projected Shakopee Park Facility Need



Sources: City of Shakopee; National Sporting Goods Association; Bonestroo



Facility Mapping





Focus group mtg

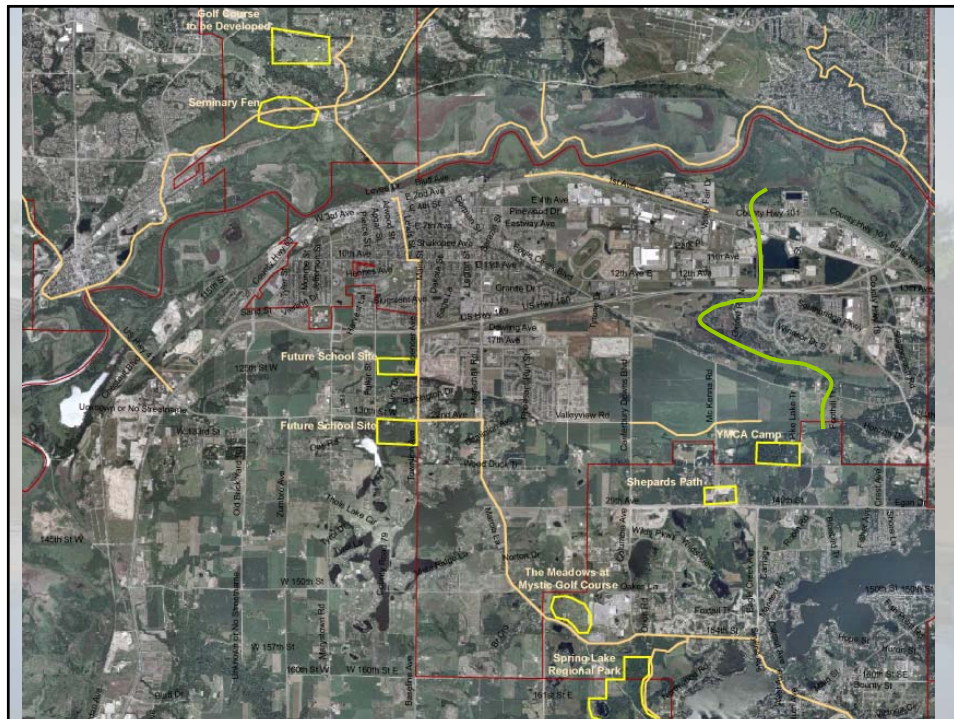
Marty Walsh
Todd Hoffman
Bob Lambert
Jane Kansier
John Powell
Terry Schwalbe
Bob Piotrowski
Mike Kinney

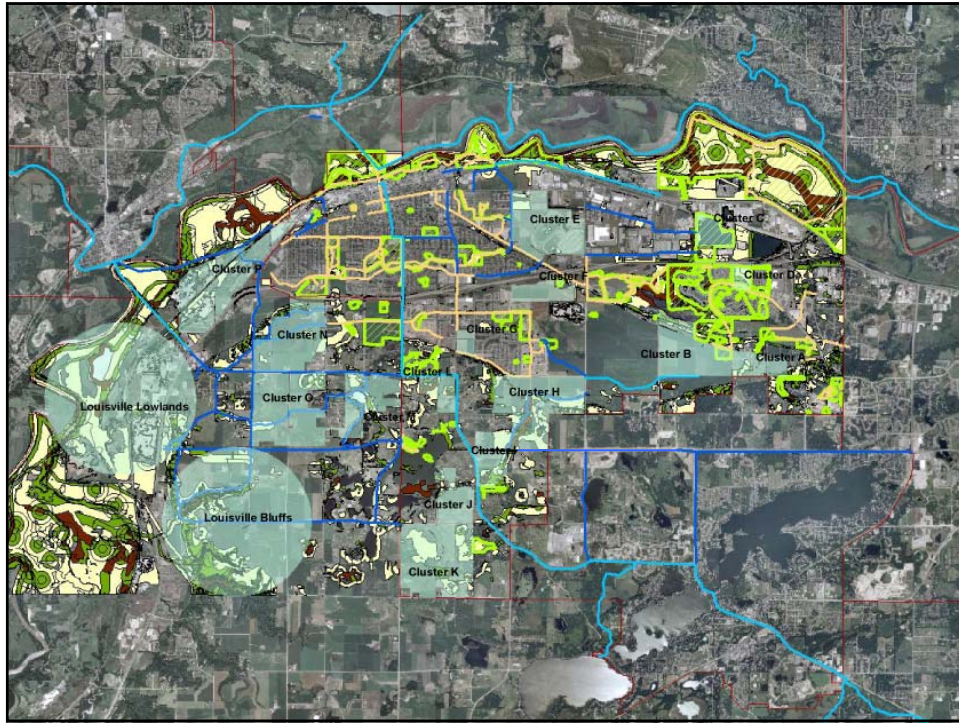
Patricia Freeman
Stan Ellison

Jon McBroom
Paula Benusa

Jonathan Vlaming
Beth Ullenberg
Yvonne Anderson
Mark Themig
Andrea Weber

Carver County
City of Chanhassen
City of Eden Prairie
City of Prior Lake
City of Savage
LMRWD
Minnesota DNR
Prior Lake-Spring Lake
Watershed District
Scott County
Shakopee Mdewakanton Sioux
Community
Shakopee School District
Shakopee Area Catholic Ed
Center
Three Rivers Park District
U.S. Fish and Wildlife Service
YMCA of Metro Minneapolis
City of Shakopee
City of Shakopee







draft goals

- Goal 1: Provide an interconnected and diverse park, trail, and open space system. **(Connections)**
- Goal 2: Create a balance and variety of passive and active recreational opportunities. **(Passive & Active Rec Facilities, Variety)**
- Goal 3: Provide parkland and recreational amenities within an appropriate distance of residents. **(Connections)**
- Goal 4: Promote a strong community identity **(Community Identity)**
- Goal 5: Promote cultural, art, and historic resources through parks and City programs. **(Historical/Cultural/Art Features)**
- Goal 6: Be effective stewards of the land. **(Preserve Natural Resources)**
- Goal 7: Adopt sustainable environmental practices. **(Sustainability)**
- Goal 8: Design and develop facilities that are accessible and safe with life-cycle features that account for long term costs and benefits. **(Design Standards)**
- Goal 9: Seek & support community involvement. **(Community Involvement)**
- Goal 10: Develop financing strategies to acquire land and develop the park & trail system. **(Funding & Implementation)**
- Goal 11: Develop financing strategies to maintain the park system and renovate existing facilities. **(Funding & Implementation)**



World Cafe Exercise