



CITY OF SHAKOPEE

2010 Property Taxes and Budget

**(Not Property
Values)**



SHAKOPEE



SCOTT COUNTY
 Department of Taxation
 200 4th Avenue West
 Shakopee, MN 55379-1220
 www.co.scott.mn.us

Your Proposed Property Tax for 2010

- THIS IS NOT A BILL - DO NOT PAY -

IMPORTANT INFORMATION IS PRINTED ON THE BACK OF THIS FORM

Taxpayer: Property ID: **272140570**
Property Address: SHAKOPEE MN 55379



SHAKOPEE MN 55379-3923

	Taxes Payable in 2009	Taxes Payable in 2010
Property Classification:	Res Hstd	Res Hstd
Taxable Market Value:	238,700	238,700

Legal Description:
 PINEWOOD ESTATES CIC 1038 Lot 002 Block 011

Mailing Addresses and Telephone Numbers	(1)	(2)	Budget and Tax Hearing Location and Dates	
	Actual 2009 Property Tax	Proposed 2010 Property Tax		
COUNTY 200 4 AVE W SHAKOPEE MN 55379-1220	727.31	739.12	December 3, 2009	6:00 P.M. Scott County Government Center 200 4th Ave W Shakopee, MN 55379 (952) 496-8167
CITY OF SHAKOPEE 129 HOLMES ST S SHAKOPEE MN 55379-9625	741.71	759.06	December 1, 2009	7:00 P.M. Shakopee City Hall 129 Holmes St S Shakopee, MN 55379 (952) 233-9326
State General Tax	0.00	0.00	NO MEETING REQUIRED	
ISD 0720 SHAKOPEE ISD 720 505 HOLMES ST S SHAKOPEE MN 55379			December 14, 2009	7:00 P.M. Central Family Center-Board Room 505 Holmes St S Shakopee, MN 55379 (952) 496-5011
SCHOOL-VOTER APPROVED	739.38	578.10		
SCHOOL-OTHER LOCAL LEVIES	146.92	132.56		
Metro Special Taxing Districts METROPOLITAN COUNCIL 390 ROBERT ST N SAINT PAUL MN 55101-1805	55.11	58.47	December 9, 2009	6:00 P.M. Metropolitan Council Offices 390 Robert St N St. Paul, MN 55101 (651) 602-1446
Other Special Taxing Districts	55.29	46.69	NO MEETING REQUIRED	
Tax Increment Tax	0.00	0.00	NO MEETING REQUIRED	
Fiscal Disparity Tax	0.00	0.00	NO MEETING REQUIRED	
TOTAL Excluding Special Assessments	\$ 2,465.72	\$ 2,314.00	Percent of Change	-6.2%

- THIS IS NOT A BILL - DO NOT PAY -



Agenda

- ❖ **How property taxes are calculated**
- ❖ How Shakopee compares
- ❖ Taxation trends
- ❖ 2010 Budget
- ❖ Value received
- ❖ Questions



Calculation of Property Tax

- Assessor - Est. Market Value
- State Legislature - Tax Capacity
- City Council - Tax levy dollars
- County - Spreads Levy
- County Treasurer - Collects Taxes

- <http://www.co.scott.mn.us>



Tax Capacity

	<u>Pay '09</u>	<u>Pay '10</u>	
Gross Tax Capacity	47,170,277	45,978,172	
Net Tax Capacity Net of TIF & Fiscal Disp.	40,940,626	39,313,800	-4.0%
CI % of Tax Capacity	34%	37%	
Homestead % of Tax Capacity	56%	51%	
Average EMV house	259,800	246,700	-5.0%
City tax net	792	764	-3.4%

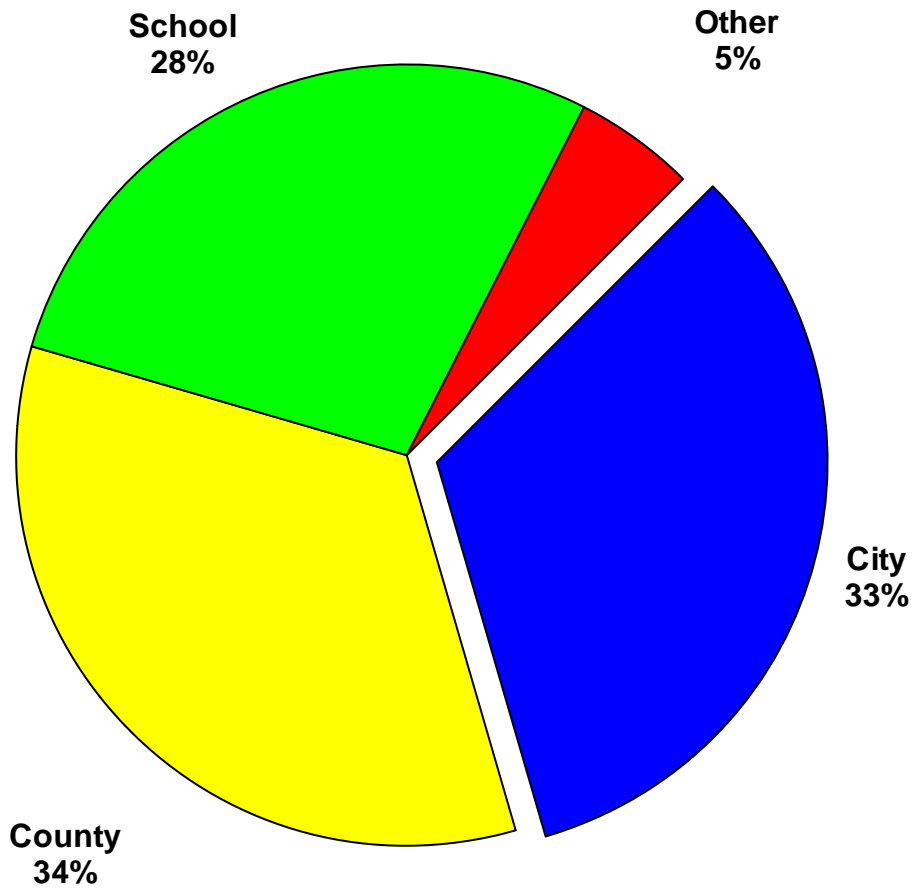


Agenda

- ❖ How property taxes are calculated
- ❖ **How Shakopee compares**
- ❖ Taxation trends
- ❖ 2010 Budget
- ❖ Value received
- ❖ Questions



City Share of Tax Dollar





Tax Capacity Rates Other Taxing Jurisdictions

	<u>2009</u>	<u>Proposed 2010</u>
○ City	32.630	33.3998
○ School	27.274	31.1914
○ County	32.684	33.1213

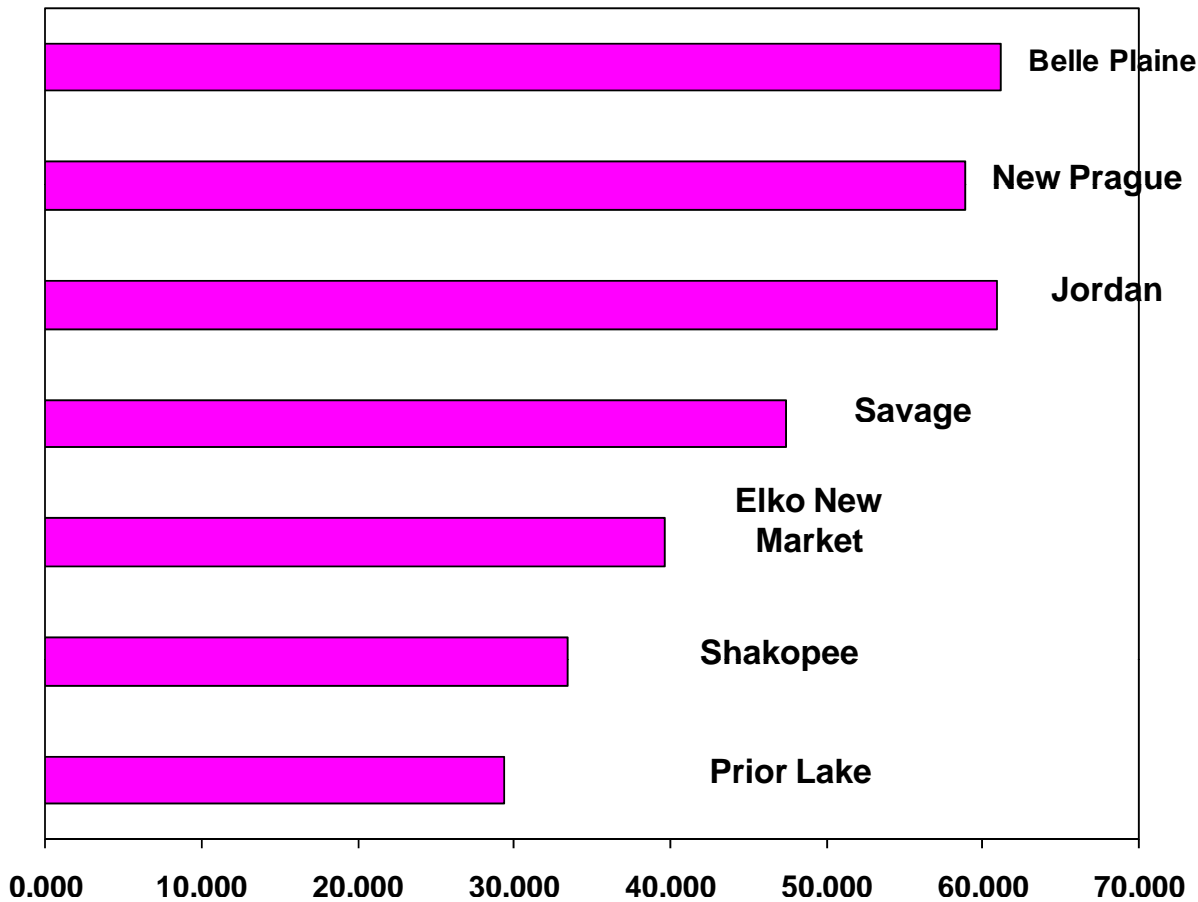


Proposed Tax Rates 2010

	<u>2009</u>	Proposed <u>2010</u>
Belle Plaine	54.023	61.221
New Prague	52.677	58.837
Jordan	52.736	60.910
Savage	46.013	47.472
Elko New Market	36.967	39.588
Shakopee	32.630	33.400
Prior Lake	27.947	29.389



Proposed Tax Rates





Fiscal Disparities 2010

	<u>Valuation</u>
Belle Plaine	\$ 1,152,060
New Prague	N/A
Jordan	668,130
Savage	926,587
Elko New Market	459,695
Prior Lake	1,582,256
Shakopee	(1,654,442)



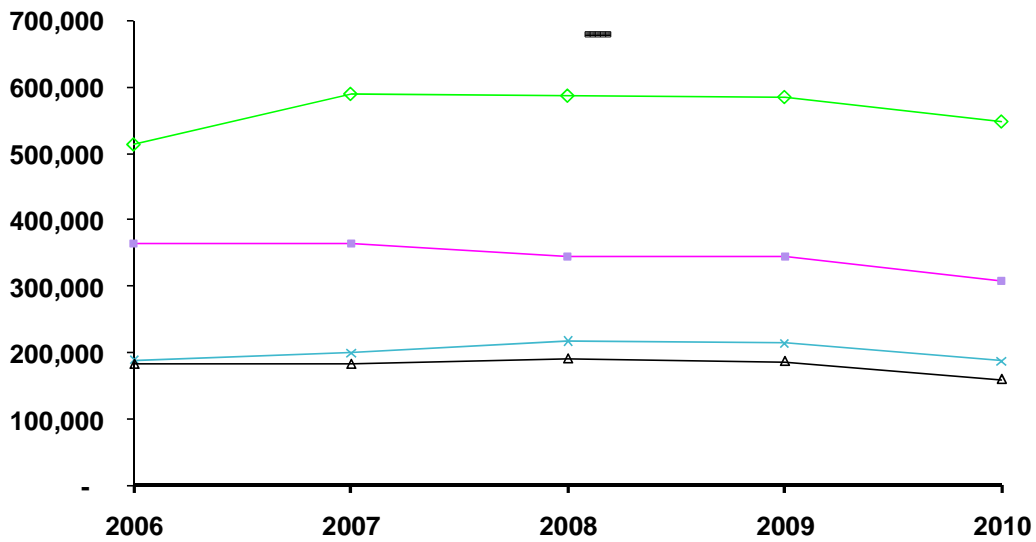
Agenda

- ❖ How property taxes are calculated
- ❖ How Shakopee compares
- ❖ **Taxation trends**
- ❖ 2010 Budget
- ❖ Value received
- ❖ Questions



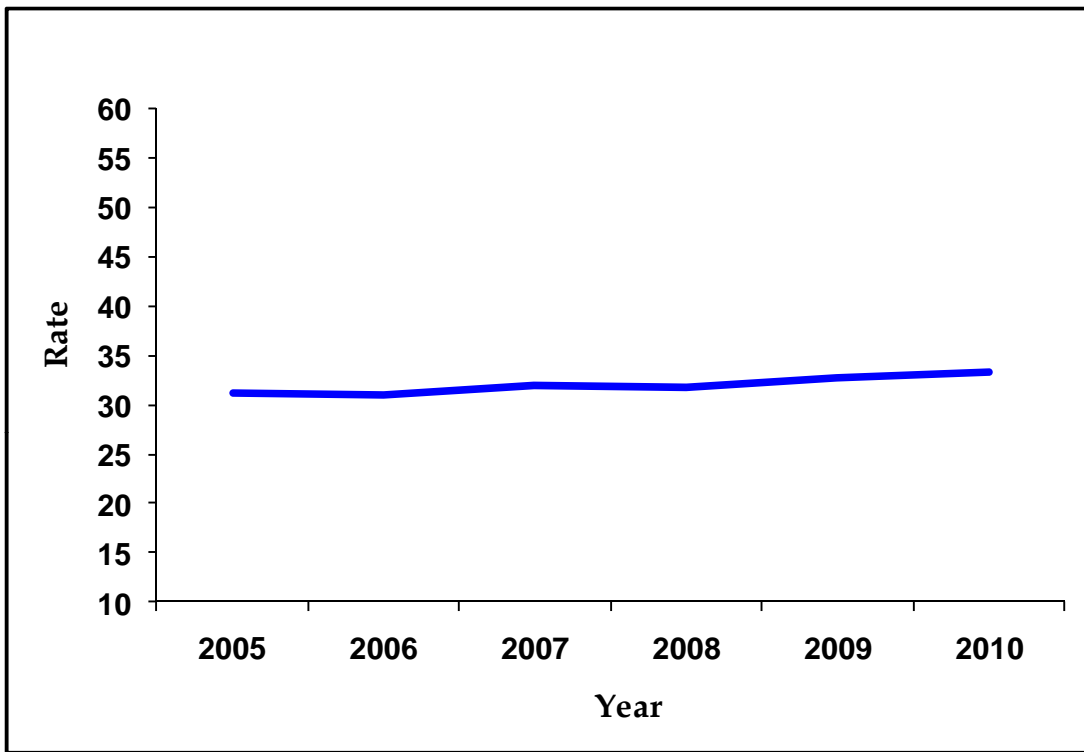
Change In Market Value

Sample Residential Parcels





Tax Rate Trend





Tax Levy Dollars

	<u>2009 Tax Levy</u>	<u>2010 Tax Levy</u>	<u>% Change</u>
General Levy	\$13,652,000	\$13,819,194	1.2%
EDA - General	60,000	0	(100.0%)
Debt Service	<u>1,005,438</u>	<u>898,244</u>	(10.7%)
Tax Capacity Levy	14,717,438	14,717,438	0.0%
Fire Referendum	<u>246,239</u>	<u>201,227</u>	(18.3%)
Total Levy	<u>\$14,963,677</u>	<u>\$14,918,665</u>	(0.3%)



City Non-debt Tax Levy History

<u>Year</u>	<u>Levy</u>	<u>Change</u>
2005/06	\$9,998,811	10.5%
2006/07	11,651,697	16.5%
2007/08	13,102,083	12.4%
2008/09	13,712,000	4.7%
2009/10	13,819,194	0.8%



Agenda

- ❖ How property taxes are calculated
- ❖ How Shakopee compares
- ❖ Taxation trends
- ❖ **2010 Budget**
- ❖ Value received
- ❖ Questions



Funds

General Fund – main operating fund

Special Revenue – EDA & Transit

Debt Service – special assessment & taxes

Capital Projects – roads, buildings, parks

Utility Funds – revenue from user fees

Internal Service - function to reduce peaks and valleys in general levy.

Equipment Fund

Building Fund

Park Asset Fund



Operating Budget

Process starts in May/June

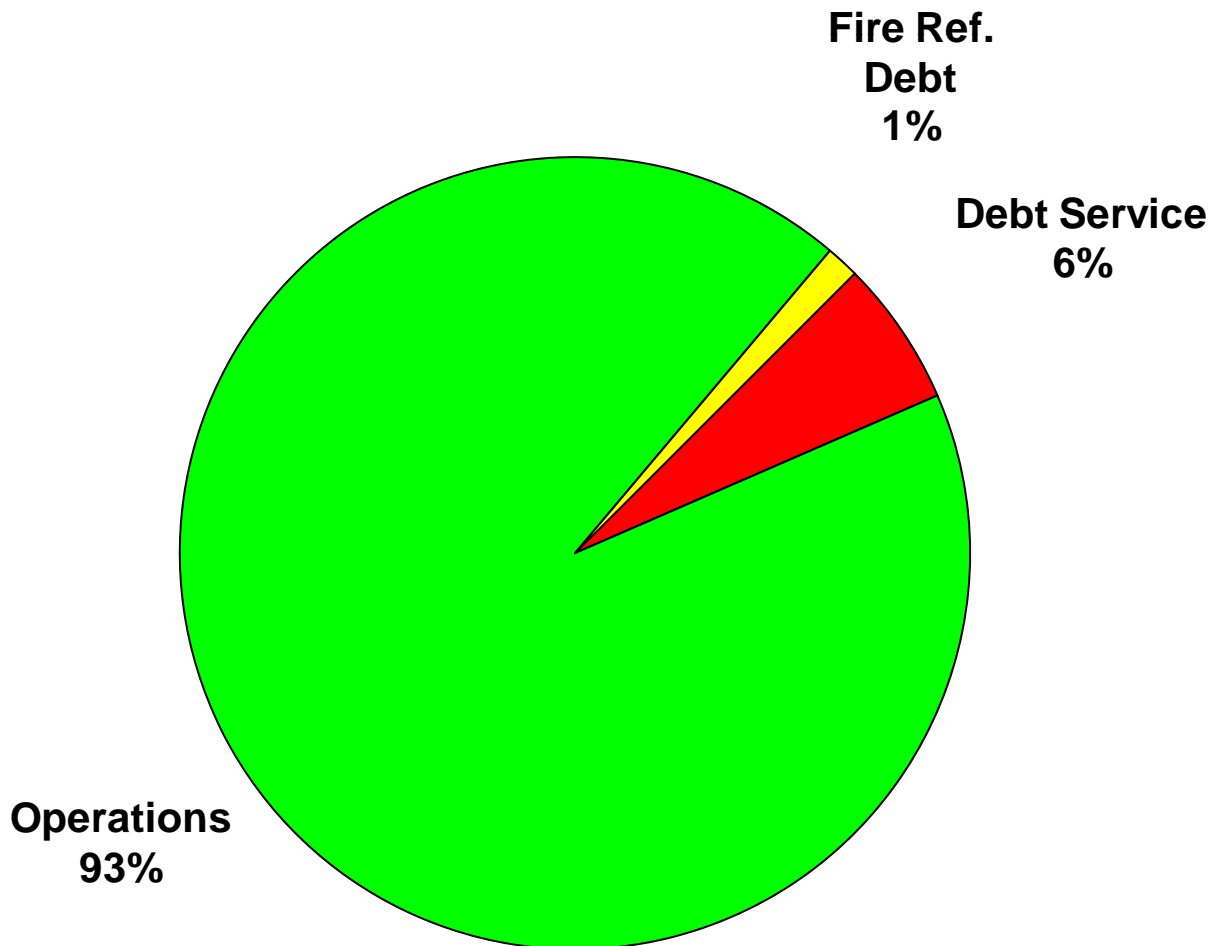
Council has public meetings in July -
September to set preliminary tax levy and
budget

Budget work continues in October and
November

Public hearing in December and adoption of
tax levy and budget



Use Of 2010 City Tax Dollar





City of Shakopee

2010 General Fund Budget



General Fund Budget Notes 2010

Total Sources down .5%

Total Uses down .9%

Staffing Reductions

- 1 Engineering
- 1 Natural Resources
- 1 Custodian

**Recreation & Telecomm. Funds
merged**

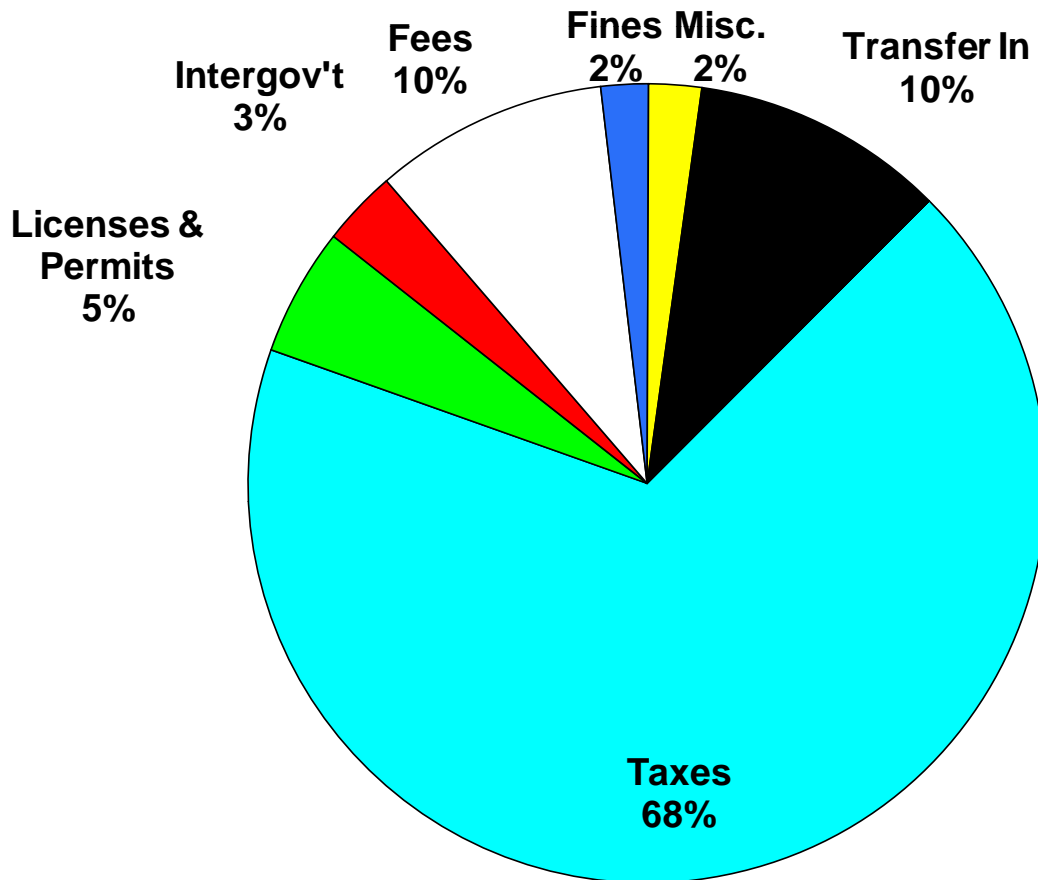
CITY OF SHAKOPEE

2010 GENERAL FUND BUDGET SUMMARY

	2009	2010
Revenue	<u>Budget</u>	<u>Estimate</u>
Taxes	\$13,299,310	\$13,483,010
Licenses and Permits	683,300	1,028,800
Intergovernmental	634,000	608,260
Charges for Service	886,600	1,880,040
Fines and Forfeits	430,000	381,000
Miscellaneous	<u>451,300</u>	<u>424,950</u>
Total Revenue	<u>16,464,510</u>	<u>17,806,060</u>
Expenditures		
General Government	3,483,660	3,265,110
Public Safety	8,993,320	9,257,200
Public Works	2,741,920	2,708,230
Culture/Recreation	1,962,200	4,382,240
Unallocated	<u>150,000</u>	<u>155,000</u>
Total Expenditures	<u>17,334,100</u>	<u>19,767,780</u>
Excess (deficiency) Revenues over Expenditures	(869,590)	(1,961,720)
Other Sources	2,004,940	2,044,400
Other Uses	(1,236,160)	
Excess (deficiency) Revenues & Other Sources Over Expenditures & Other Uses	<u>\$ (100,810)</u>	<u>\$ 82,680</u>

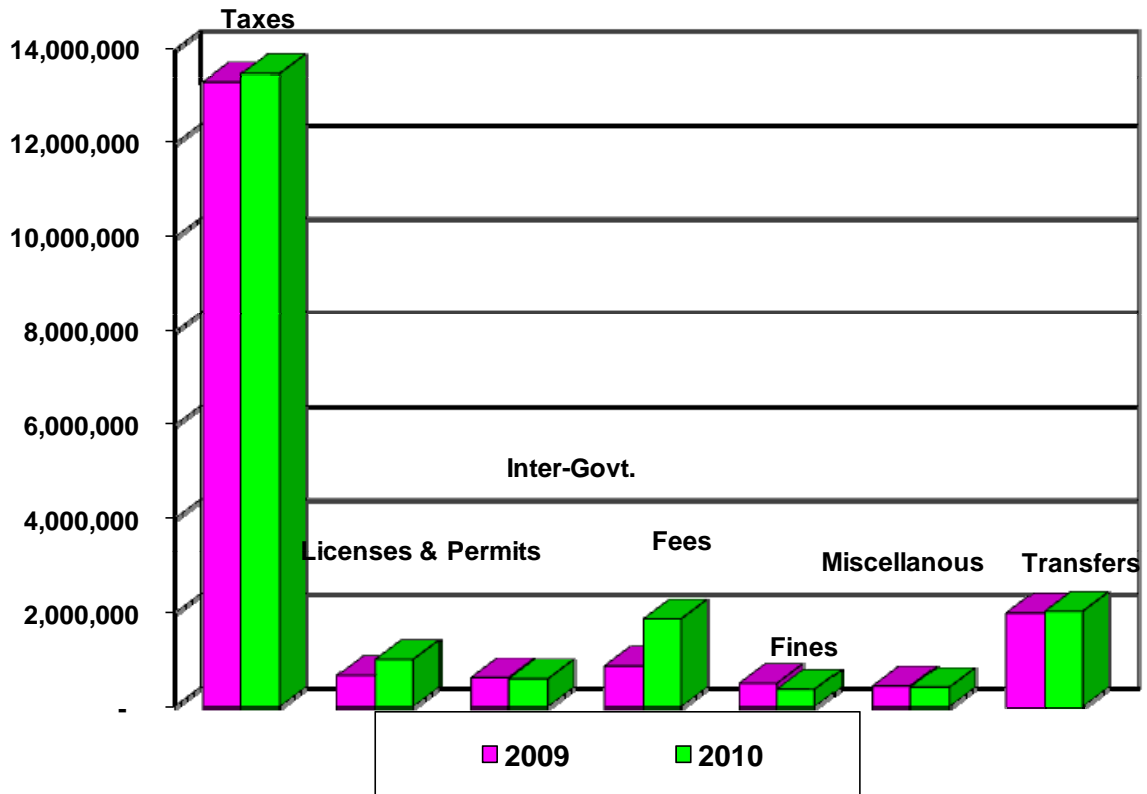


General Fund Budget 2010 Revenues



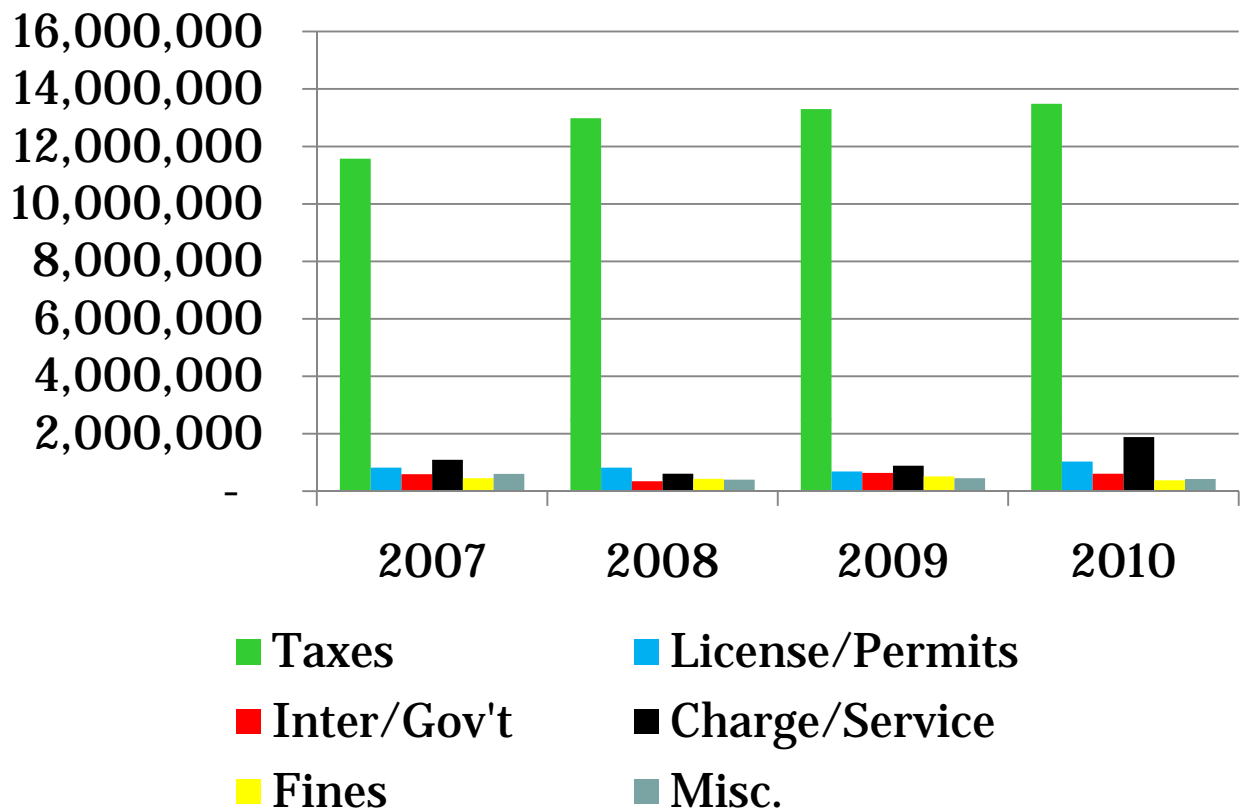


General Fund Budget Revenues



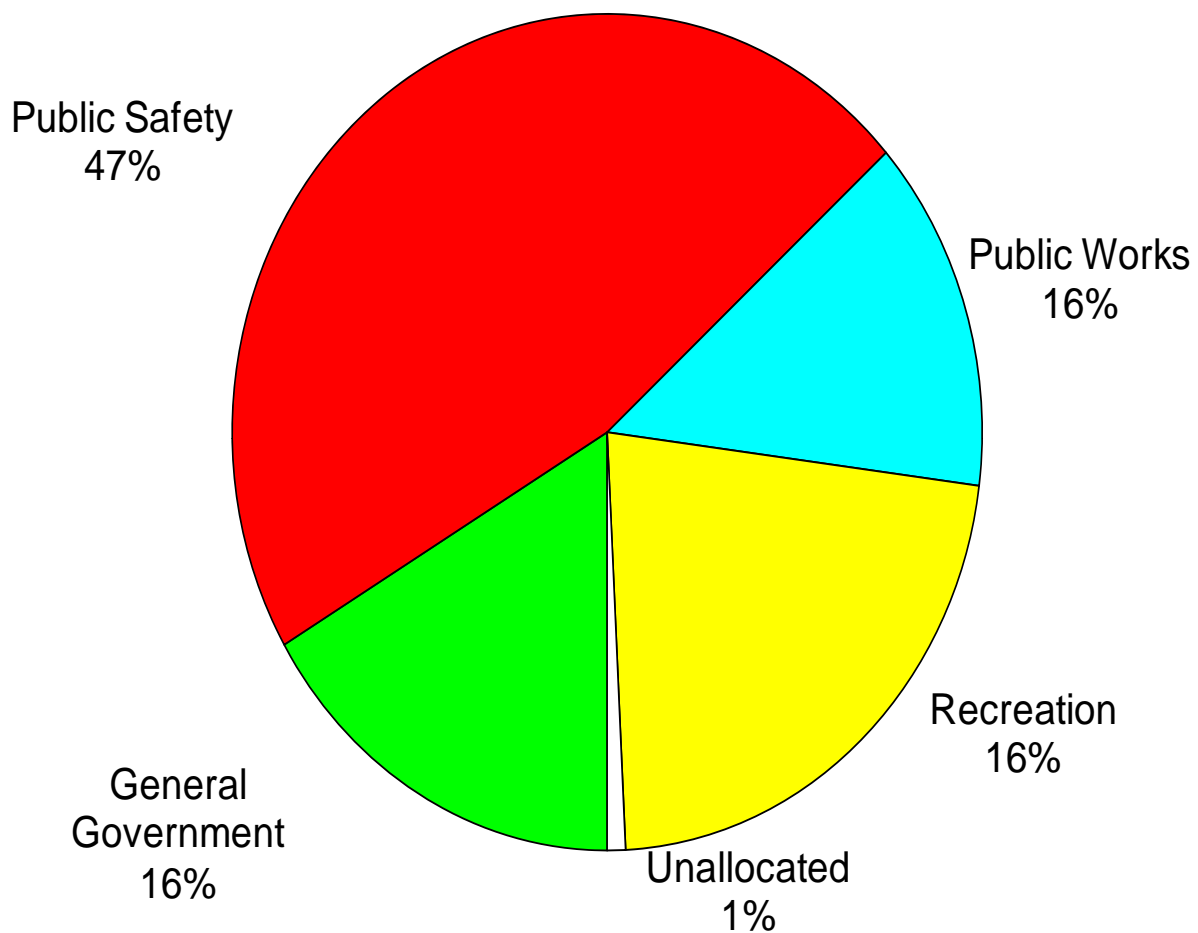


Revenue Trend



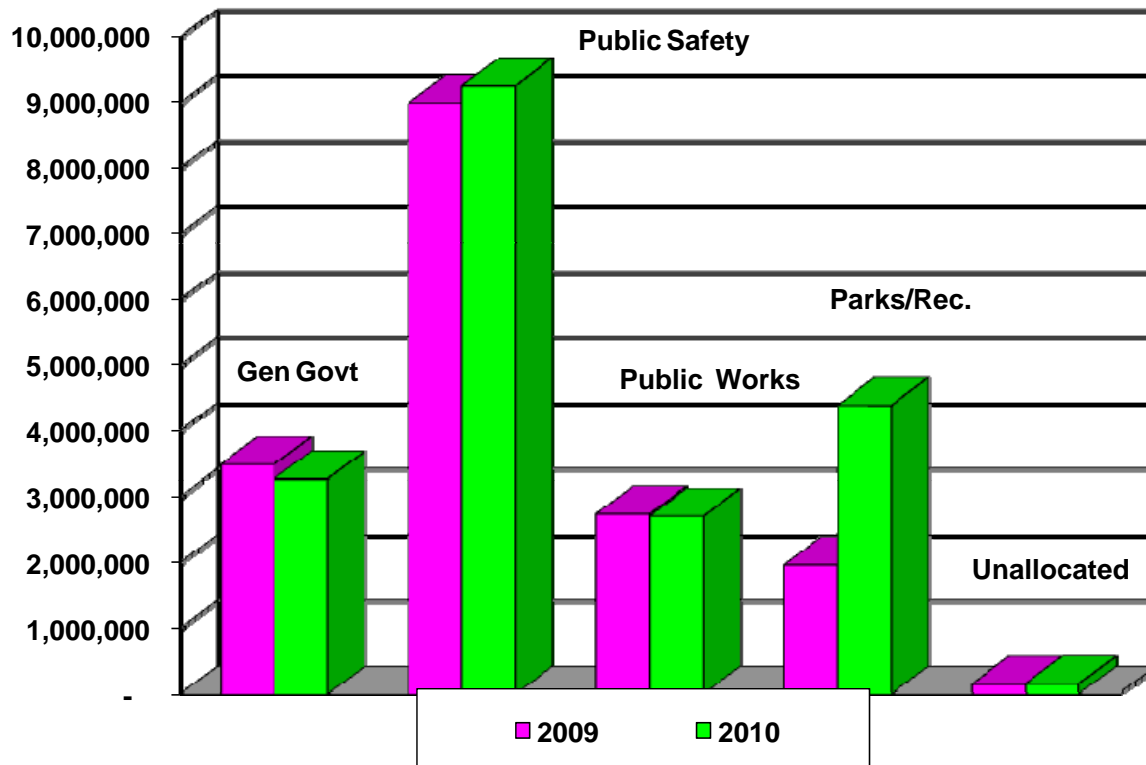


General Fund Budget Expenditures 2010



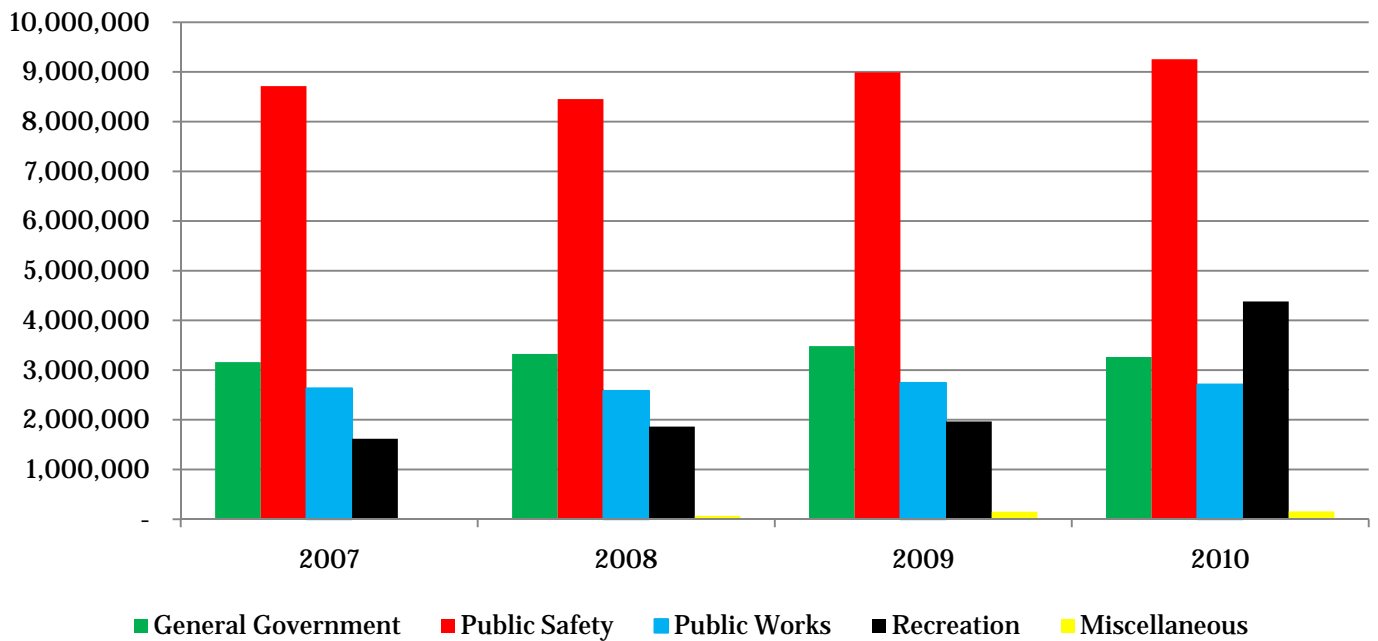


General Fund Expenditures





General Fund Expenditure Trend





Agenda

- ❖ How property taxes are calculated
- ❖ How Shakopee compares
- ❖ Taxation trends
- ❖ 2010 Budget
- ❖ **Value received**
- ❖ Questions



General Government

Council
Administration
City Clerk
Finance
Planning/Community Development
Information Technology
Government Building – City Hall





Public Safety Services

24/7 Police Services

47 Licensed Officers

15,028 calls Jan – Oct 2009





Public Safety Services

24/7 Fire Services

46 Authorized Firefighters

3 Full time employees

422 calls Jan – Oct 2009





Public Safety Services

Building Inspection Services

4 Inspectors





Public Works Services

Engineering Division

Public Infrastructure – roads/utilities

7 Employees





Public Works Services

Street Division

Snow Plowing

Street/alley/parking lot Maintenance

Sewer & Storm drainage

11 Employees (+3)

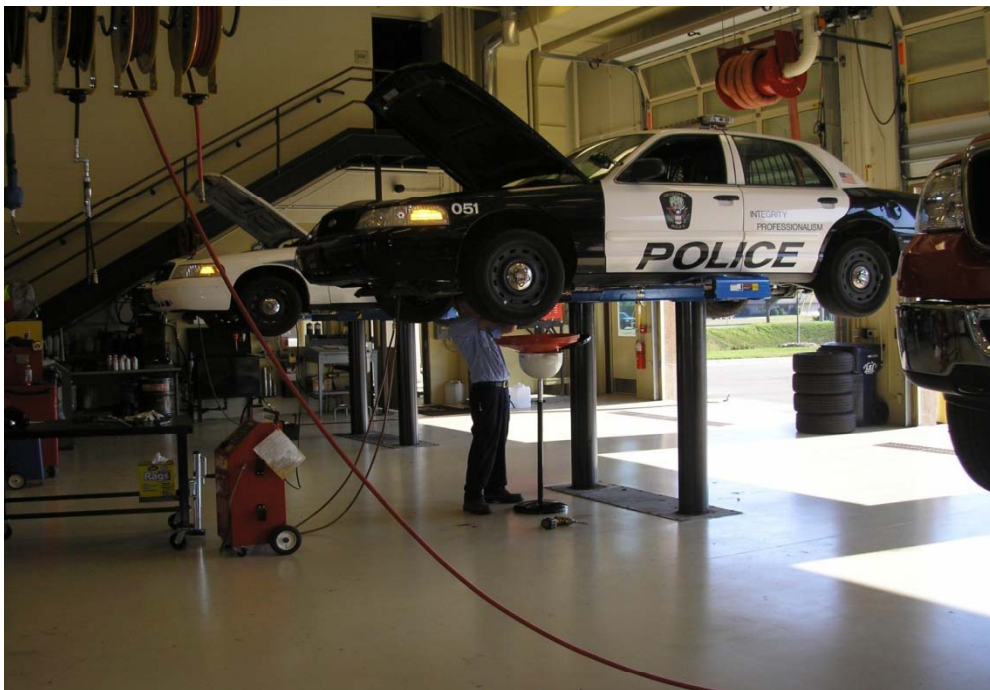




Public Works Services

Fleet Division

Equipment set up and repair
4 Employees





Culture/Recreation

Park Maintenance Division

mow 355 acres per week
maintain 28 parks & public space
9 Employees





Culture/Recreation

Recreation Programs/development

Community Center open 100 hrs/week

130+ Programs/activities offered

7.5 FT Employees

130 PT Employees





Culture/Recreation

Natural Resources

Library





Cost of Services Average Value Home

\$764 Per Year

\$64 Per Month

50-80

45/ea

100

40

50

Cable

Sports ticket

Dining out

Cell phone

Internet



Productivity Measures for General Fund Operations

	<u>2008</u>	<u>2009</u>	<u>2010</u>
Population *	33,660	33,860	34,000
FTE Positions**	134	127	124
Pop. per Employee	251	267	274
Cost \$/population	552	589	581

* Estimates

** Assumes all budgeted positions are filled.

*** Recreation and Telecomm merged



Agenda

- ❖ How property taxes are calculated
- ❖ How Shakopee compares
- ❖ Taxation trends
- ❖ 2010 Budget
- ❖ Value received
- ❖ **Questions**